

Anodica 2



Historisch overzicht

In de periode 1969-1995 zijn ruim 8000 Anodica camera's voortgebracht. De Anodica 6 is van de drie typen het meest succesvol geweest.◊



ANODICA

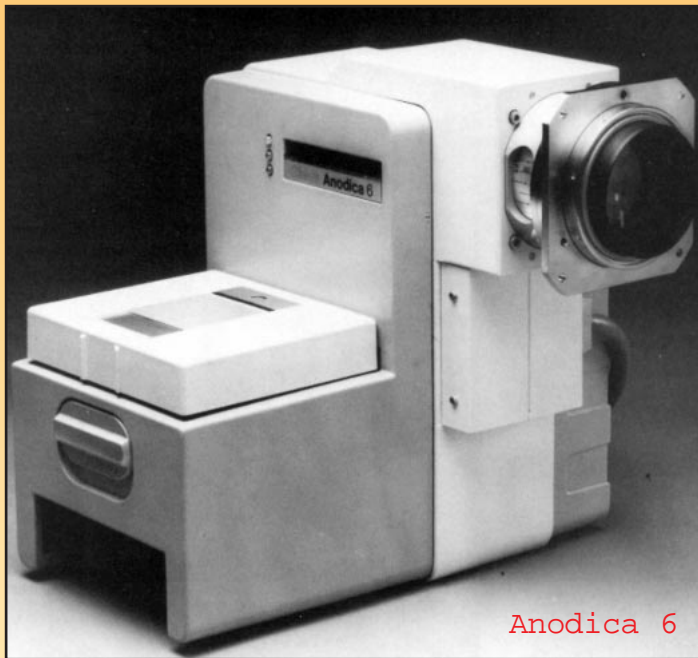
Anode screen photography

General description

1972

In the new generation of intensifier systems the image presented on the anode screen is of such high quality that it lends itself very well to be photographed by means of a camera. For this purpose the lightweight automatic "Anodica" camera for 100 mm sheetfilm, featuring an optical system that has been designed to match the specific requirements of anode screen photography.

Where previously all examinations were carried out with large-size radiographs, it is now possible to carry out the examinations at lower dose and at lower film costs, using 100 x 100 mm sheet films.



Anodica 6

	bld/sec
Anodica 2	2
Anodica 6	1-6
Anodica 12	1-8 of 1-12

Cldelft

The benefits of the Anodica camera system are manifold:

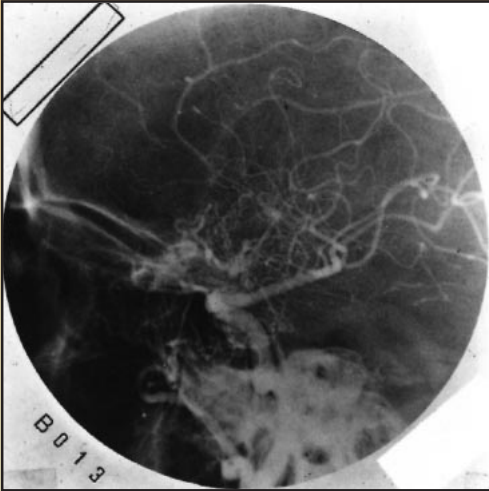
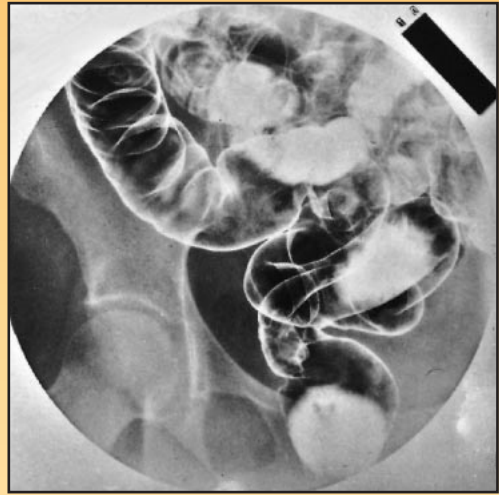
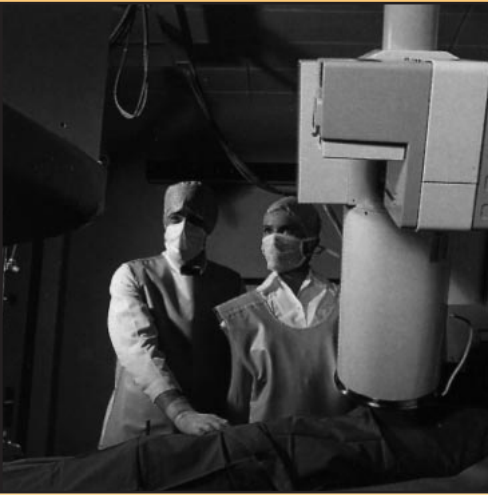
The patient receives less radiation. For the same dosage the radiologist will obtain better detailed pictures.

Greatly reduced risk of movement blur, as for the same X-ray tube shorter exposure times are possible.

Better resolution of the X-ray picture, thanks to the possibility of using a fine focus X-ray tube in combination with the shorter exposure time.

The radiologist can switch over to a larger magnification, as permitted by the image intensifier, which enables more details to be observed for a smaller area, but presented on the same 100 x 100 mm size.

In view of these considerations and the fact that the 100 x 100 mm film has a finer grain than a full size X-ray film, it is possible to obtain a totally comparable, if not better, information content.

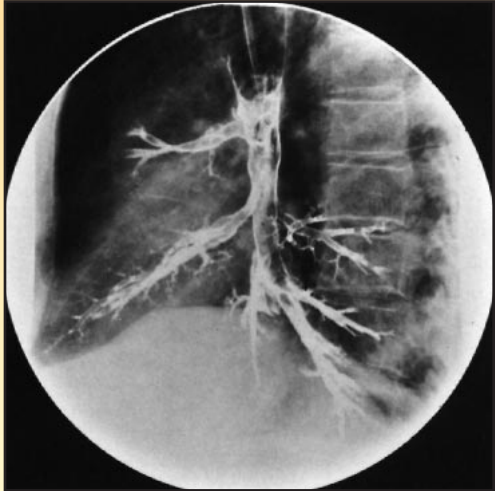


Application of Anodica 6

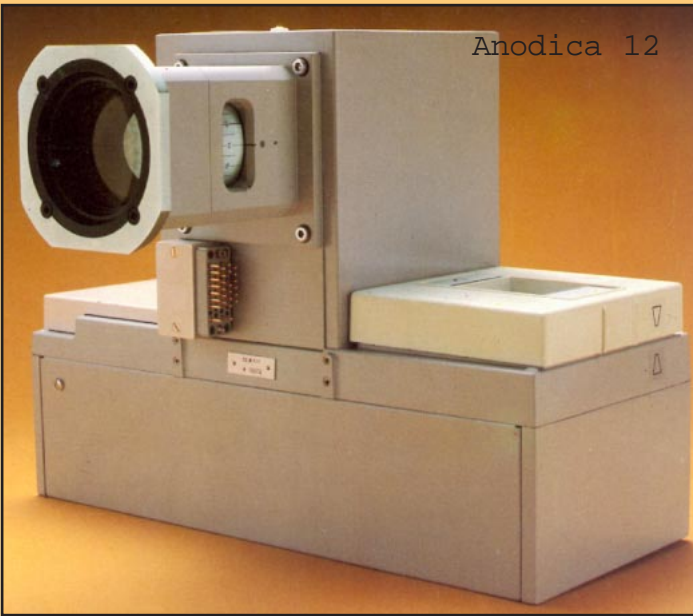
Exposure Anodica 2

Exposure Anodica 6

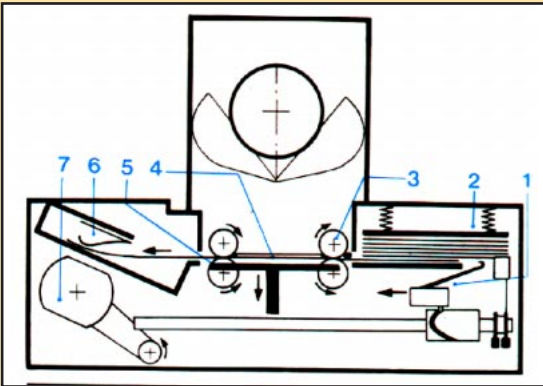
Exposure Anodica 6



Anodica 12



In summary, it can be stated that the Anodica Camera takes full advantage in its high-definition 100 mm pictures of the latest improvements of image intensifier technology, such as Caesium iodide input screens, improved electronoptics, improved anode screens with resolutions of approx. 5 line pairs per mm, or even more. In practice, the Anodica in the radiological department relieves the X-ray staff from the exhausting daily movement of heavy large-size cassettes to the dark room. Furthermore, due to the fact that the camera magazine holds a large quantity of 100 mm sheet films, there is no need for continuously obtaining supplies of cassettes from the darkroom.◊



1. Filmtransport hook
2. Supply magazine
3. Film transport roller
4. Filmgate
5. Pressure plate
6. Take-up magazine
7. Film transport motor

Clidelt